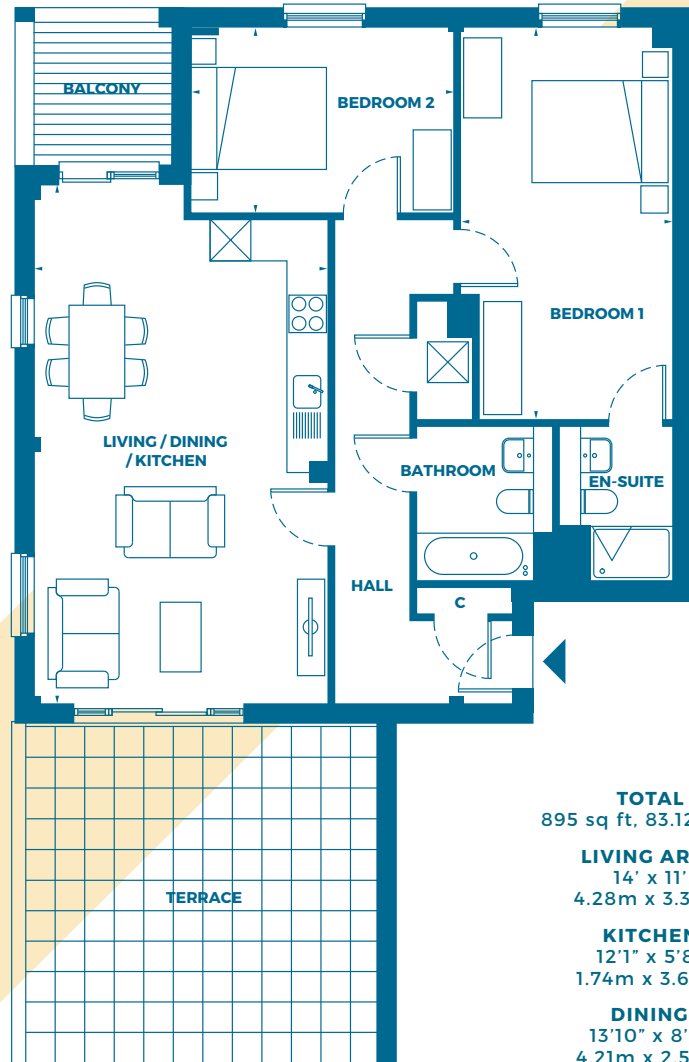




THE BRIDGE

# PENTHOUSE 65

2 BEDROOMS



**TOTAL**  
895 sq ft, 83.12 sq m

**LIVING AREA**  
14' x 11'  
4.28m x 3.35m

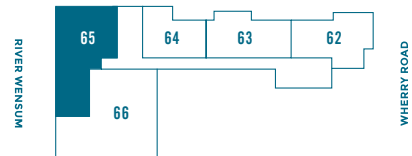
**KITCHEN**  
12'1" x 5'8"  
1.74m x 3.67m

**DINING**  
13'10" x 8'4"  
4.21m x 2.54m

**BEDROOM 1**  
18'8" x 10'  
5.69m x 3.06m

**BEDROOM 2**  
12'6" x 8'10"  
3.82m x 2.68m

**TERRACE**  
441 sq ft, 41 sq m



A development by



Sole selling agent



01603 229428  
WWW.THEBRIDGENORWICH.CO.UK

The preliminary plans are intended only as a guide and may have changed during construction. Further they are not to scale. Prospective purchasers should not rely on this information and must procure that their solicitor checks the plans and specification attached to their contract. All CGI's included in this brochure are indicative of final specification and are subject to change. Your attention is drawn to the fact that it might not be possible to offer the branded products and certain specifications as outlined. In such cases a comparable alternative will be provided. Generator Developments reserve the right to make changes as referred to above without notice.